

# MILLI MILLI



Edition 27 - July 2007

## CONTENTS:

- Work Start Programs
- Rio Tinto Iron Ore Indigenous Scholarships
- Roebourne and Tom Price High School Balls
- Cape Lambert Production Partnership
- Biodiesel Production in Tom Price

**RIO  
TINTO**

IRON ORE

'Readers please note that there may be references and images in this publication to people who have since passed away so we ask that you are mindful when sharing with others.'

# FROM THE MANAGERS' DESK



## A MESSAGE FROM MARK SIMPSON, TRAINING MANAGER

Hello to all of our Milli Milli readers, I hope this edition finds you well and happy. It is great to see another Milli Milli in print. I know it is quite a task developing Milli Milli, and I thank those concerned for all their hard work pulling it together.

It is worth mentioning that currently the Rio Tinto Iron Ore apprentice program has 173 apprentices and trainees, of which 11 per cent are women in non-traditional trades and 23 per cent are indigenous. We are aiming for 30 per cent indigenous overall, and it was especially pleasing to see that 30 per cent of our 2007 intake was indigenous.

The four current apprentice workshops (Dampier, two in Cape Lambert and Tom Price) will soon be added to with a Perth base dedicated to fly-in fly-out apprentices. These workshops aim to develop high quality skills at the front end of apprenticeships, specifically focussing on hand skills and safety. It is very pleasing that the Rio Tinto Iron Ore apprentices and trainees are recognised as first class, with two of last years apprentices being finalists in the WA Training Awards, and one apprentice winning the outright WA Resource Industry Apprentice of the Year award.

It is also terrific that the safety record of Rio Tinto Iron Ore apprentices and trainees is now being recognised as world class. Rio Tinto Iron Ore Apprentices and Trainees recently reached six years lost-time-injury-free, which means that there hasn't been an injury or incident that has caused an apprentice or trainee to

lose a full shift in the last six years - what a great outcome! Congratulations to the apprentice training team and all apprentices and trainees who have contributed to this result.

We are currently creating new Traineeship positions in the areas of Asset Management, Information Technology, Human Resources, Pastoral, Water Industry Operations, Conservation and Land Management, and Fire and Emergency Management. We are hoping Aboriginal people will fill many of these roles.

The Aboriginal employment team, led by Camis Smith, is progressing well with seven excellent mentors now available to the over 200 direct aboriginal employees. We estimate there is at least another 150 Aboriginal contractor employees, and when our computing systems are updated later this year, we will be better able to record this data.

The team is working hard on improving the ways local aboriginal people are trained and employed, and we are pleased with the new fast-track employment approach which utilises the simulator and accesses health and fitness assistance. Even if you have been unsuccessful getting a job with Rio Tinto Iron Ore in the past the new system is designed to help you meet the required standards. Please contact Lynette or Jeb on 91435207 to discuss how they can help you get a job with Rio Tinto Iron Ore.

I would also like to mention the ATAL earthworks team, which does some of the toughest bulldozing work for Rio Tinto Iron Ore, working away

often in mountainous country. This year they are busy working on a large number of drillpads, access roads and infrastructure corridors due to the large exploration program underway. Trainees from this program are highly sought after in the business and by other employers because of their skills, safety focus and team work. This team also has an outstanding safety record of six and a half years lost-time-injury-free. Congratulations to the Supervisors and all the Trainees that have contributed to this wonderful record.

Rio Tinto is working with other industry of the region, including Chevron, BHPB and Woodside, as well as community and government to establish an Australian Technical College in the Pilbara focused on year 11 and 12 students, particularly Aboriginal students. The program encourages apprenticeships to begin while participants are at school, and has received \$23million funding over three years from the Federal Government. Pilbara TAFE and Pundulmurra College is closely involved in this project along with the WA Department of Education and Training. Nancy Rees has been appointed as CEO to manage its progress.

Finally, it is worth mentioning the soon-to-be-completed Regional Partnership Agreement where industry and government are working together to remove barriers to Aboriginal employment.

I wish everyone good health and happiness and look forward to seeing you soon.



## A MESSAGE FROM MICHAEL O'LOUGHLIN, MANAGER COMMUNITIES

Welcome to a new edition of Milli Milli magazine.

2006 was another busy year for the Communities team and I congratulate all of those people who have greatly contributed to the ongoing success of our major projects.

Personal and business investment in our partnerships program, in land access negotiations and heritage surveys and in ongoing community consultation all contribute to our teams' work, and to the success of our communities.

In 2006, the Community Partnerships Program (CPP) was created to work with local community organisations and government agencies to create longer term partnerships and ultimately a stronger, more sustainable Pilbara community.

More than nine million dollars will be injected over a three year period, and to date over 40 community partnerships have been established. Some examples include the David Wirrpanda Foundation, the biodiesel training facility in Tom Price, and the Artsource aboriginal artist workshop.

An additional \$17 million was invested into the community in 2006.

The Heritage Team and all the Traditional Owners that participate in heritage surveys have been particularly busy in 2006 and in the first part of 2007. Some 96 surveys have been undertaken since the start of 2006.

This has meant that the Heritage Team and Traditional Owners spent more than 3, 980 days overall undertaking surveys. The Heritage Team is expanding in 2007 to meet increasing demands. This will ensure that early and meaningful consultation takes place with Traditional Owners and heritage surveys are undertaken to a high standard.

The creation of the Marnda Mia CNC by Aboriginal Traditional Owners has paved the way in consultation and negotiation with Rio Tinto. The CNC ensured that a number of binding initial agreements (BIA's) were completed between Rio Tinto and individual claim groups. All of these deal with issues relating to obtaining the relevant consents for specified mining activities by the traditional owner, and are an interim measure whereby Rio Tinto will make payments in consideration of the consent.

Final agreements will address Traditional Owners' wider aspirations for the present and for the future, as well as sustainability issues affecting the long-term implementation of the agreements. The next one to two years should see them finalised.

I would like to welcome to our team the highly-experienced aboriginal dancer Michael Leslie, who joins us to provide dance and drama lessons to promote healthy lifestyle messages and raise confidence among participants. Michael has worked in London's West End, South Africa and New York.

Looking ahead, I am keen to begin negotiations with other native title groups in the area with the aim of reaching claim-wide final agreements in the next few years. The ongoing development of long term strategies for our Pilbara operations will continue to interact with and support its towns, while our recruitment for apprenticeships and traineeships for 2007 is looking at 30 per cent of positions to be filled by indigenous people.

It is also vital to identify and support programs to address key community issues through the Pilbara Community Partnerships Program in conjunction with state and local governments while working together to develop planning and policy frameworks for our towns.

Again, welcome to 2007. It promises to be a busy and productive year.



## DETERMINATION FOR NATIVE TITLE

In an historic court hearing, the Muntulgura Guruma Native Title Consent Determination was held earlier this year at Kings Lake in Tom Price.

With special guests in attendance including Eastern Guruma Elders Eva Connors and Nelson Hughes and group spokespeople Sue Boyd and Tanya Stevens, as well as many other Eastern Guruma representatives, the event marked the hearing of the final assessment of the Eastern Guruma Native Title claim.

The claim legally and formally acknowledges the connection of the Eastern Guruma people to the land in this area.

Rio Tinto Iron Ore's Superintendent Indigenous Relations Ross Humphries said that the claim was registered on April 22 1999.

*"There was widespread support for the claim from industry, Rio Tinto Iron Ore, local government, other aboriginal groups, pastoralists and the Pilbara Native Title Service,"* said Ross.

*"Although the decision has taken eight years to be reached, the Eastern Guruma people consider this to be a somewhat short period of time.*

*"The process for such a claim is complex and a great deal of information and material needs to be collected and submitted to authorities to demonstrate the Eastern Guruma people's connection to the land."*





## ASHBURTON WORK START PROGRAM

The Ashburton Work Start Program is a pre-employment initiative aimed at providing local indigenous communities with the training and skills to gain employment in the mining industry.

Based in the inland towns of Tom Price and Paraburdoo, the success of the program is the result of the partnership between Job Futures/ North West Jobs, Rio Tinto Iron Ore, Skilled Engineering, Ashburton Aboriginal Corporation and the Shire of Ashburton.

The training courses are tailored to be industry specific in areas as diverse as literacy, financial planning and budgeting, and Certificate I in resources and infrastructure.

The training aims to facilitate employment in positions as either apprentices or trainees. Already the program has achieved remarkable results by providing a flexible and responsive approach to supporting participants. To date, three AWS participants have progressed to full time RTIO employment, one to a Mechanical Apprenticeship and one to an Administration traineeship.

*"It is essential that we arm our participants with valuable and practical skills, which can be adapted to many of the jobs out here in the Pilbara,"* said Paul Butcher, Indigenous Employment Strategy Advisor, inland.

*"This excellent pre-employment program ultimately helps Indigenous people build confidence in themselves and their potential to*

*gain employment, which makes them better employees."*

A "No Barriers" approach to the program has been adopted by all partners which have again agreed to support another intake of participants, which will ensure the continuation of the program.



On the coast there is now a similar program involving the Roebourne Community Development Employment Production and the Cape Lambert port operations. This program is also showing signs of becoming a success and has been embraced by all.

## ROEBOURNE WORK START PROGRAM

Rio Tinto Iron Ore in partnership with the Roebourne Community Development Employment Project, Pilbara TAFE, Brida, Job Futures and other organisations are aiming to increase the number of Aboriginal people in the Shire of Roebourne with valuable and practical work skills to enable them to join the workforce.

The program is still in the early stages but the goal is to achieve similar results to the Ashburton Work Start Program.

For more information please contact Lennis Connors RTIO on 0417 923 658.



## LANG HANCOCK RAIL CORRIDOR AVOIDS HERITAGE SITES

The heritage surveys for the Lang Hancock Rail covered 36 square kilometres of rail corridor that extends for 56 kilometres from the Hope Downs mine to West Angelas.

Another three rail sidings at Juna Downs, Spoon Bill Siding and Eagle Siding were also surveyed.

The heritage surveys were undertaken with representatives from Martu Idja Bunjima, Innawonga Bunjima, Gobawarra Minduarra Yinhawangga, Ngarlawangga and Eastern Guruma.

Staff from Calibre and Rio Tinto Expansion Projects attended many of the surveys to explain the route of the corridor and help to make decisions about redesign in the event heritage sites were located.

The surveys located a total of 65 sites which included scarred trees, artefact scatters and rock shelters. With the exception of two sites at Eagle Siding, all heritage sites remain undisturbed.





## CONGRATULATING ALL SCHOLARS

Talented students who have been awarded a Rio Tinto Iron Ore Indigenous Scholarship gathered in Perth on 30 March for an annual function to recognise their progress, studies and careers.

Eight students attended, some in their final year of study and others who are relatively new to the program. Law, medicine, commerce and marine science are just a few of the professional fields students are studying.

The function provided students with an opportunity to meet Rio Tinto Iron Ore (RTIO) employees and past scholarship recipients to gain advice on study and work prospects, and in some cases opportunities for work experience.

Scholarship recipient Bruce Rudeforth says the scholarship with RTIO has significantly increased his interest in the resources industry.

*"I didn't think I'd ever use my law degree in the resources industry. Being involved in the scholarship program has opened my eyes to the industry and it's now where I want to work when I finish studying,"* said Bruce.

Past scholarship recipient Jolleen Hicks, who has finished studying, said the event was a great opportunity to speak with other recipients and share her experiences.

*"There are so many opportunities out there for Indigenous people to work in the mining industry and my advice is to get out there and take all of them,"* said Jolleen.

*"I'm doing my law secondment with RTIO's graduate program and it's going really well. Going into the workforce can be a little daunting so it was great to reassure other students and describe entrance options such as RTIO's graduate program."*

Superintendent Community Development Stuart Robertson said the Rio Tinto Iron Ore Indigenous Scholarships Program has been a great success.

*"In conjunction with the Karratha Curtin University Scholarship Program, it has seen approximately 20 Indigenous students graduate and move into professional employment,"* says Stuart.

*"We have been operating the program for 14 years and it fits with our goal to provide access to students to train in professional fields and work in their own communities once they've graduated."*

The program enables students to complete university debt free and also provides support for items such as the cost of textbooks.

Individuals from all the Traditional Owner groups in the Pilbara who achieve TEE entrance into university and study mining related degrees will be on the priority list to be considered for a scholarship. Scholarships can also be awarded to students from other regions, depending on the number of places available.

To find out more about the Rio Tinto Iron Ore Scholarship program contact Tracey Heimberger on 08 91435084 or by email at [tracey.heimberger@riotinto.com](mailto:tracey.heimberger@riotinto.com)



## ROEBOURNE HIGH SCHOOL BALL

In late April, the Roebourne High School Ball was held in Roebourne for year 10 students.

Belle of the Ball was Sherelle Lockyer and Beau of the ball was Owen Pat.

The Ball was kindly supported by the David Wirrpanda Foundation and Rio Tinto Iron Ore and provided an opportunity for the students to dress up and dance the night away.



## TOM PRICE BALL



The School Ball was also held recently in Tom Price and for the first time families from Bellary, Wakathuni, Paraburdoo and Tom Price all joined in together for the event.

Debbie Douglass from the Tom Price Enrichment Centre would like to thank Gumala for funding the hire of the outfits and the tickets to the ball and the community support in assisting the students in preparing the ball for the day.

*"Without the support of all of the partners of the Enrichment Centre towards this project, these students and their families would not have had this wonderful experience."* Debbie said.



## IMPROVED WASTE DISPOSAL PRESERVES COMMUNITY WATER SUPPLY

They said it takes a community to raise a child, the same could be said for creating solutions to rubbish disposal which is exactly what has happened in the Bellary community.

Part of a sustainable waste management plan, members of the Bellary community have built a new rubbish disposal system to clean up their community and prevent ground water contamination. Bellary has previously recorded a number of water samples which showed potential for water contamination from waste contamination.

Prior to the project, the Bellary rubbish tip was in an untidy state with household rubbish spread over a large area. Local community members were concerned that there might be waste seepage into the low lying water table

which could potentially endanger the local water supply.

Therefore a project was initiated five years ago between Rio Tinto Iron Ore, the Shire of Ashburton and Bellary and Wakathuni communities. This resulted in the establishment of a Community Waste management plan which included the donation of 10 000ltr waste bins and a basic hydrology plan.

The plan received overwhelming community support and Paraburdoo Mine Operations also played an important role helping organise and manage the mobilisation of equipment and labourers.

As a result, the Bellary tip was officially closed and negotiations were held with the Shire of Ashburton so all of the waste could be transferred

to a licensed shire waste facility in Paraburdoo. Norm Roe, Community Development Officer, Tom Price said *"The logistics had to be carefully planned, mainly for safety reasons, as we used heavy equipment to move the waste"*.

*"The Bellary project cost around \$9,000 and involved a number of key agencies and community groups. Everyone worked in the spirit of a true partnership and we would like to make special mention of Richard Savage, Norm Roe, the ATAL Training and Earthworks Team, Ashburton Aboriginal Corporation CDEP, Larry Softley (CEO, Gumala Aboriginal Corporation) and Ben Van Roon and his team from Paraburdoo mine for their contribution to the success of this project"*.





## CAPE LAMBERT PRODUCTION PARTNERSHIP

In 2006, the Cape Lambert Production Partnership was launched, bringing together the operations team at Cape Lambert with Brida Contracting, a Roebourne based contracting company.

The partnership aims to create opportunities for local indigenous people to join Rio Tinto Iron Ore Operations, primarily at Cape Lambert, with long term sustainable employment for the local community the main goal.

The program incorporates a tiered approach over 12 months which aims to qualify trainees with practical and transferable fixed plant operator's skills. All successful candidates will have the opportunity to gain full time employment with Rio Tinto Iron Ore.

*"All of our trainees initially work for a six month period on day shifts, primarily learning basic skills,"* said Cape Lambert Production Superintendent Kevin McLean.

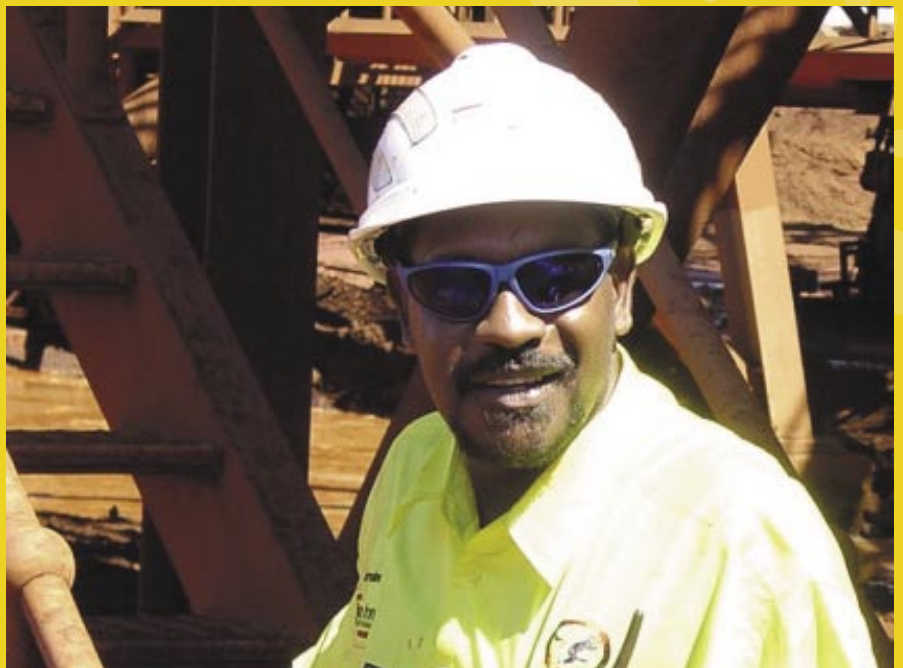
*"Then they move into a three month day shift rotation, followed by full time continuous day and night shift work in permanent positions for those who successfully complete the program."*

Whilst working on site, participants are trained in all aspects of fixed plant operations, including learning how to operate unloaders, large loaders, trucks, road brooms and other equipment relevant to fixed plant.

Trainees spend time working across shifts, alongside Rio Tinto Iron Ore people in all aspects of the operations.

Right now, there are 11 Brida contractors involved in production operations, with two working through the program to be currently working on shift.

"Although it is still early in the program, we are encouraged by the enthusiasm and commitment from all those involved to make this a sustainable and successful partnership that creates indigenous employment opportunities here at Cape Lambert," said Kevin.





## JIGALONG TEACHERS VISIT LOCAL KARRATHA SCHOOLS

In April, eight teachers from the Jigalong School together with their principal, Helen Foan, travelled to Karratha to visit local schools over two days and expand their knowledge of the Aboriginal Literacy Strategy.

Accommodation for the teachers was donated by Rio Tinto and allowed the teachers to spend much needed time visiting local schools such as Peg's Creek Primary School, Millers Well Primary School and Karratha Senior High School.

After visiting the schools and meeting with other teachers, the Jigalong staff spent two days at the Aboriginal Literacy Strategy conference where they learnt valuable techniques in the effort to improve literacy among Aboriginal children.

## HERITAGE TEAM VISIT & TRAINING

Members of the Heritage team will soon be visiting communities to discuss issues relating to heritage surveys. The Heritage Team will give a brief presentation on the type of work involved in heritage surveys and talk about Rio Tinto Iron Ore's health and safety requirements for people participating. The presentations will enable people who haven't been on surveys before to gain a better understanding of what is involved and act as a refresher for those with experience in heritage surveys.

These presentations also give people the opportunity to meet the members

of our Heritage Team who will accompany you on heritage surveys and to answer any questions you may have about heritage surveys.

The Heritage Team can also organise to present the Community Driver Awareness course for people using the Tom Price - Dampier or the Roebourne - Pannawonica access roads. This takes just over an hour and the community will be issued a permit and people with a valid drivers licence will be given a Driver Awareness card.

Four Wheel Drive courses can also be provided for people considering

driving on heritage surveys. The course takes a full day and is broken into two sections; the first part of the course takes about 3-4 hours. The rest of the day includes vehicle inspection, tyre changing techniques and practical driving.

Our team will be in touch soon to organise these presentations, however, if anyone has any questions relating to these presentations or the Four Wheel drive course, please contact Merv Lockyer on 9143 5088 or Gavin Martin on 9143 5035, or you can call our reception on 9143 5082.

## INDIGENOUS EMPLOYMENT ROADSHOWS

During April, Rio Tinto Iron Ore conducted community information sessions about employment, training and other opportunities within the organisation in Tom Price and Roebourne.

During the half day workshops, members of Rio Tinto Iron Ore's Indigenous Employment Team outlined the different training and employment opportunities available to local people such as Workready, Pilbara Pathways and school based initiatives.

Rio Tinto Iron Ore's Community and External Relations Team followed up by discussing recent developments in native title negotiations, cultural heritage management and community development.

These representatives were then able to answer questions and spend time with guests at a barbecue lunch provided by the company.

*"This was a great opportunity to connect with our local community*

*and to inform them of the work that we are doing at Rio Tinto,"* said Ross Humphries, Superintendent for Indigenous Liaison.

*"It is really important to communicate our programs with our local people, and to invite them to become involved. This will make our community programs better and stronger."*



## BIODIESEL PRODUCTION FACILITY CREATES NEW EMPLOYMENT IN TOM PRICE

The long anticipated first two-day biodiesel training course was held in Tom Price in March.

Participants were educated about guidelines for clean, green and recycled diesel fuel, while the workshop allowed nearly 40 people to view the production methods and the applications of biodiesel first hand.

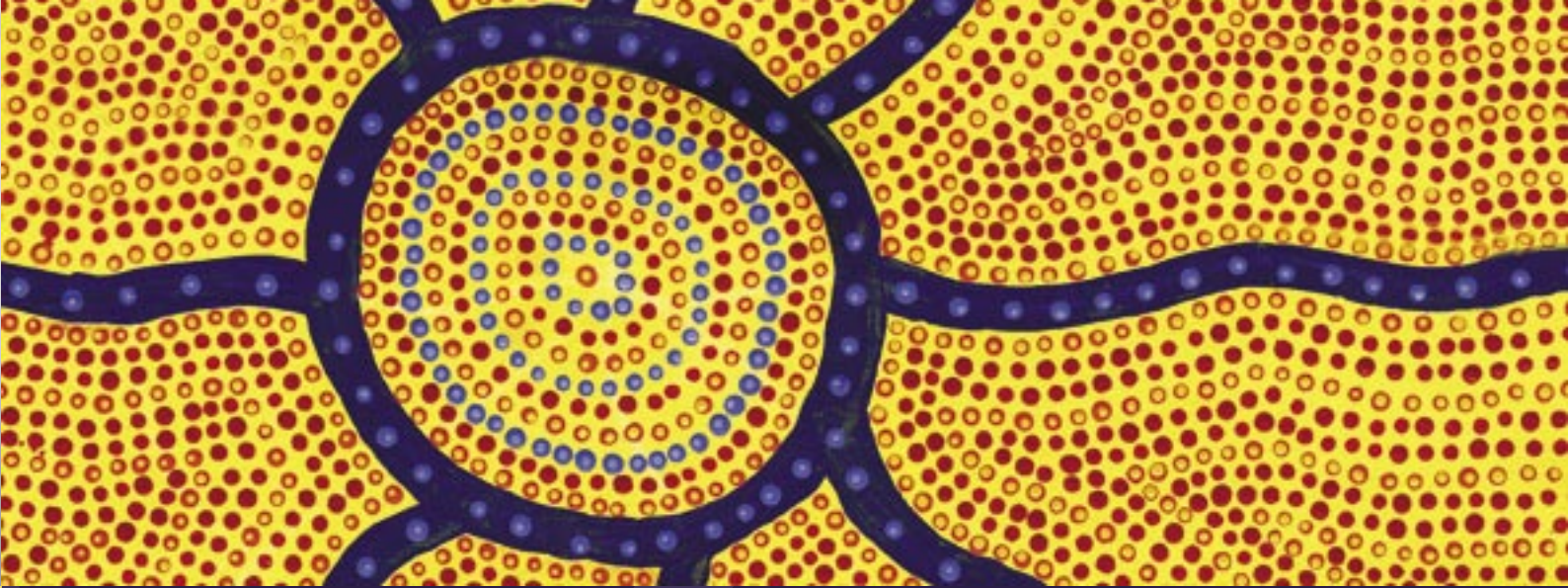
The course was held at the Ashburton Aboriginal Corporation, which is in a one-year partnership with Rio Tinto Iron Ore to establish a biodiesel production facility in the area. It also integrates the corporation's Community Development Employment Program (CDEP) 'Work Ready' training program.

Currently, six full-time indigenous employees work to produce 6,000 litres of biodiesel a month for use on plant and machinery within the Shire of Ashburton. The Ashburton Aboriginal Corporation's three management vehicles, a truck and a backhoe have also changed to the renewable fuel source.

*"The health of our global community largely depends on how we manage our carbon emissions over the next decade, and the production and responsible use of biodiesel is one way we can positively contribute to this important issue,"* said Ashburton Aboriginal Corporation's Janet Brown.

If you are in the Tom Price area and would like to take part in the July biodiesel training session or have any questions about the program, please call Janet on 9189 1758.





## INTRODUCTION TO THE 2007 HERITAGE TEAM

Over the past year there has been a lot of Heritage Surveys and Heritage works, going on, in and around the entire Pilbara region.

The Rio Tinto Iron Ore Heritage team are currently working in conjunction with 18-20 of the local Traditional Owner groups in their respected regions.

There have been a number of staff changes that have occurred within the Heritage team. We would like to take this opportunity to introduce our our newest team members & briefly share what the rest of the team is up to:

### KEITH BODMAN

Is our new Manager for Indigenous Communities and Heritage who joined the team in late October.

### GAVIN MARTIN

Joined the team in February as our new Superintendent for Heritage Liaison. He has replaced Ross Humphries who has now moved across into the role of Superintendent for Indigenous Liaison.

### KEN MULVANEY

As Specialist Cultural Heritage, Ken is working closely with the proposed National Heritage listing of the Dampier Archipelago, including the Burrup.

### ANDY COLLIS

Specialist Cultural Heritage working with Rio Tinto Minerals (DSL) and Rio Tinto Explorations.

### JOEL DEACON

Has moved into Acting Superintendent Heritage Program Development and Compliance. Joel is replacing Jo Thomson, while she is on maternity leave.

### MICK CHAWULA

Is the Training / Safety Officer for the Dampier Communities and External Relations team.

We have five new Heritage Advisors; **Annabelle Davis** - Hope Downs (Perth Based), **Helen Selimiotis** - Is working in and around the Brockman and Tom Price areas, **Luke Lowery** - Hope Downs (Perth Based) and **Ed Clark** and **Amy Stevens** who will be based in Tom Price.

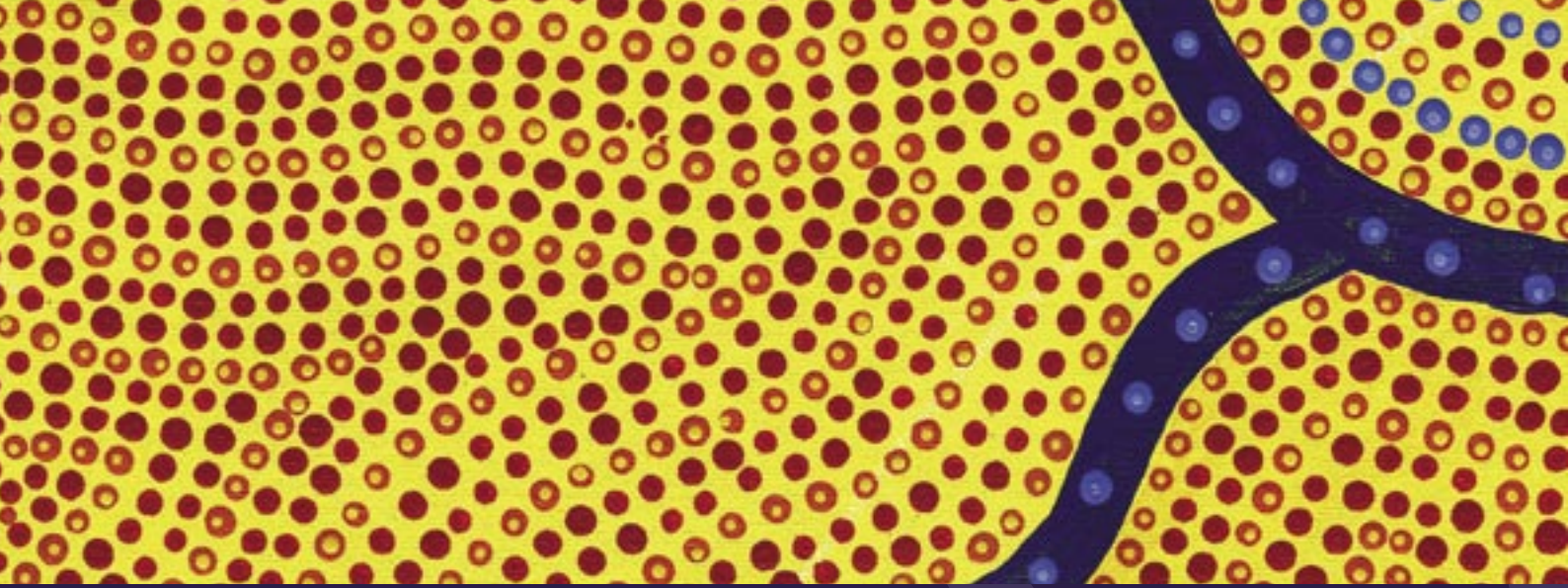
We also have four new Heritage Liaison Officers; **Merv Lockyer**, **Kylie Potter**, **Anthony Alec** and **Bob Tait** - Hope Downs (Perth Based).

Our Administration and Support Team consists of; **Kym Anderson**, **Kylie McLennan**, **Alana Connors** & finally **Belinda Jankowski** - Hope Downs (Perth Based).

**Brian "Cobber" Royce**  
Is now happily retired and returned to Bruce Rock with his wife Maree.

The team will be doing a diverse variety of work in the upcoming year and will be involved in many archaeological and anthropological surveys.

We look forward to seeing and hearing from you all when we are out in the community this year.



## COMMUNITY DEVELOPMENT TEAM

The Community Development Team for Rio Tinto Iron Ore currently comprises of Stuart, Michael, Norm and Tracey and look after capacity building initiatives for Indigenous communities around the Pilbara.

### STUART ROBERTSON:

Superintendent Community Development focuses on broader community development activity within Indigenous communities, Indigenous business development opportunities, contracting and Indigenous scholarships program.

### TRACEY HEIMBERGER:

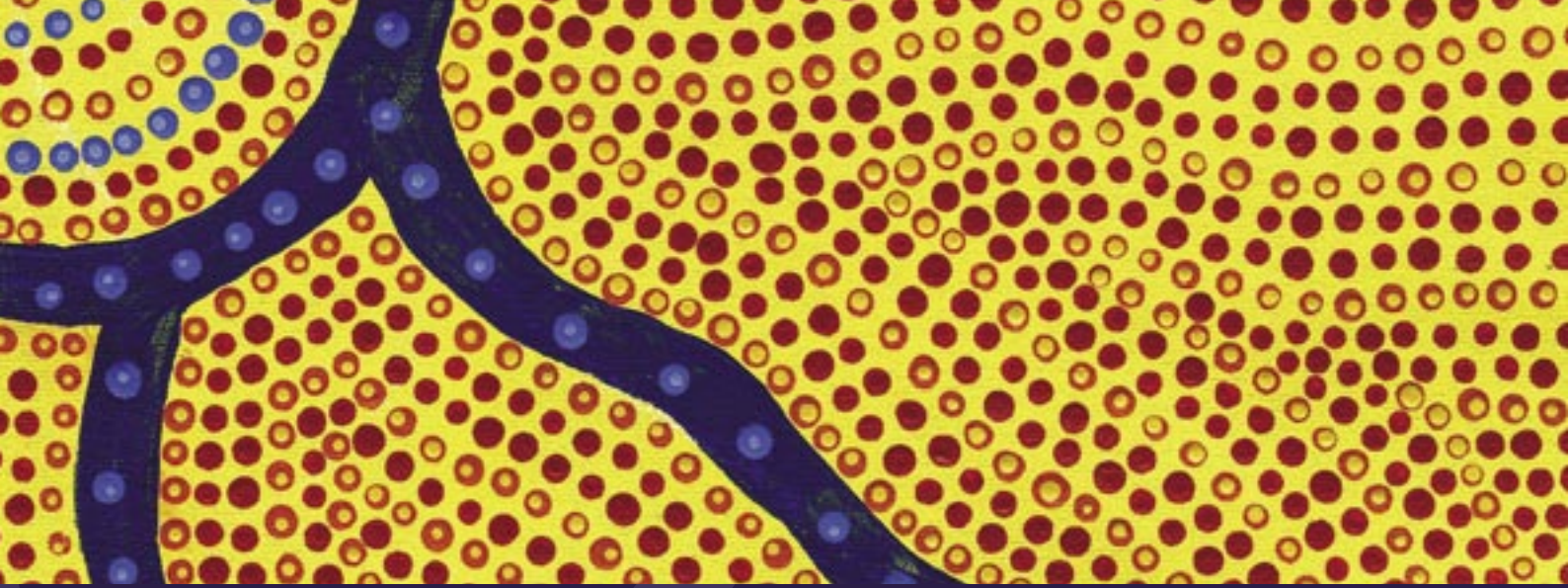
Indigenous Capacity Building Coordinator focuses on various community capacity building programs providing assistance to community groups and individuals, including for, women's programs, health initiatives and other beneficial programs the community may seek assistance with.

### MICHAEL ROE:

Business Development Facilitator Assisting Indigenous business initiatives in all facets with the establishment of viable and sustainable business ventures and offering ongoing assistance/mentoring, provide assistance with business plans, obtaining loans and develop capacity with contract work.

### NORM ROE:

Community Development Officer, Tom Price. Establishing strong links between Rio Tinto Iron Ore and the Aboriginal community through assistance with enterprise opportunities and managing issues that impact on their development and well being.



## INDIGENOUS EMPLOYMENT STRATEGY TEAM

The Indigenous Employment Strategy Team (IES) was assembled approximately 12 months ago to help achieve the targets set for Indigenous employment set by Rio Tinto Iron Ore. Based predominately in Dampier, the Team aims to help with employment and retention initiatives whilst also facilitating the achievement of long term Indigenous employment targets.

increase student participation and enhance literacy and numeracy for Indigenous people in the Pilbara. To add to the Team there are seven mentors that assist with ensuring that Rio Tinto Iron Ore achieves its employment targets. The seven mentors are based in various locations and support Indigenous employees and their line supervisors manage issues in the workplace and provide advice on employment matters.

### CAMIS SMITH:

Principal Advisor to Indigenous Employment and Manager of the IES team. Camis advises on Indigenous employment, broader Indigenous issues, initiatives and program needs.

### LYNETTE UPTON:

As Indigenous Employment Strategy Advisor Lynette focuses on the implementation of Rio Tinto Indigenous Employment Strategy and the introduction of various programs which enhance Indigenous employment.

### JADE-ELLEN BEATTIE:

Indigenous Recruitment Advisor helps assist Indigenous job seekers gain employment with Pilbara Iron. Jade-Ellen also provides Human Resources services to Indigenous applicants being considered for vacancies.

### BRAD SNELL:

As Specialist Education Brad focuses on Indigenous education and the various programs which aim to

### MENTOR DETAILS:

#### Austin James

Pannawonnicca, 7 Mile Rail, Cape Lambert, Hamersley Station and ATAL Team Dampier.  
Mobile : 0419952806 Phone : 9143 5220

#### Clinton Walker

Dampier Operations and Central Park  
Mobile : 0439907902 Phone : 9143 5249

#### Nathane Graham

Marandoo and Brockman  
Mobile : 0419091573 Phone : 9159 5307

#### Regina Fisher

ATAL Team Tom Price, Tom Price Operations  
Mobile : 0419098241 Phone : 9159 5306

#### Paul Butcher

Paraburdoo Operations and Ashburton Work Start Program  
Mobile : 0438918370 Phone : 9143 4171

#### Lennis Connors

Cape Lambert Apprentices and Roebourne Work Start Program  
Mobile : 0417923658 Phone : 9143 5079

#### Richard Walker

West Angelas, Yandicoogina, Hope Downs  
Mobile : 0409683626

## EMPLOYMENT OPPORTUNITIES



Rio Tinto Iron Ore in the Pilbara operates and maintains a network of 10 mines, three ports and the largest privately owned railway in the world.

Rio Tinto Iron Ore's activities involve finding, mining and processing iron ore, with the business producing more than 143 million tonnes annually and still growing towards a goal of 200 million tonnes.

To meet the growing demand of its expanding operations, Rio Tinto Iron Ore is constantly recruiting for roles in the Pilbara and in Perth.

As a large employer there are many challenging positions in areas such as electrical, mechanical, mining and chemical engineering; metallurgy; trades; operators; occupational health and safety; environmental science; surveying; geoscience; human resources; commerce and finance; legal; secretarial and administration.

To discover the opportunities Rio Tinto has to offer go to [www.pilbarairon.com.au/careers](http://www.pilbarairon.com.au/careers) and submit your details in the area provided.

If for any reason the site is not working or you cannot gain access to the internet please contact Jade-Ellen Beattie, the Indigenous Recruitment Advisor on 9143 5254.

## JULUWARLU GROUP ABORIGINAL CORPORATION



Design and layout of Milli Milli magazine by the Juluwarlu Group Aboriginal Corporation. Juluwarlu Group Aboriginal Corporation is an indigenous media organization located in Roebourne dedicated to using new technologies to preserve and promote ngarda history and culture.

For more details of us and our work, please visit our web site: [www.juluwarlu.pilbara.net](http://www.juluwarlu.pilbara.net)

## THE ARTIST

Artwork Produced by Maureen Lorraine James.

*"Morning Star is the one that gets up in the morning and in our language we call it Barnourrarna. Back in the days when there were no alarm clocks our old people used the morning star as a clock to get up in the morning."*

